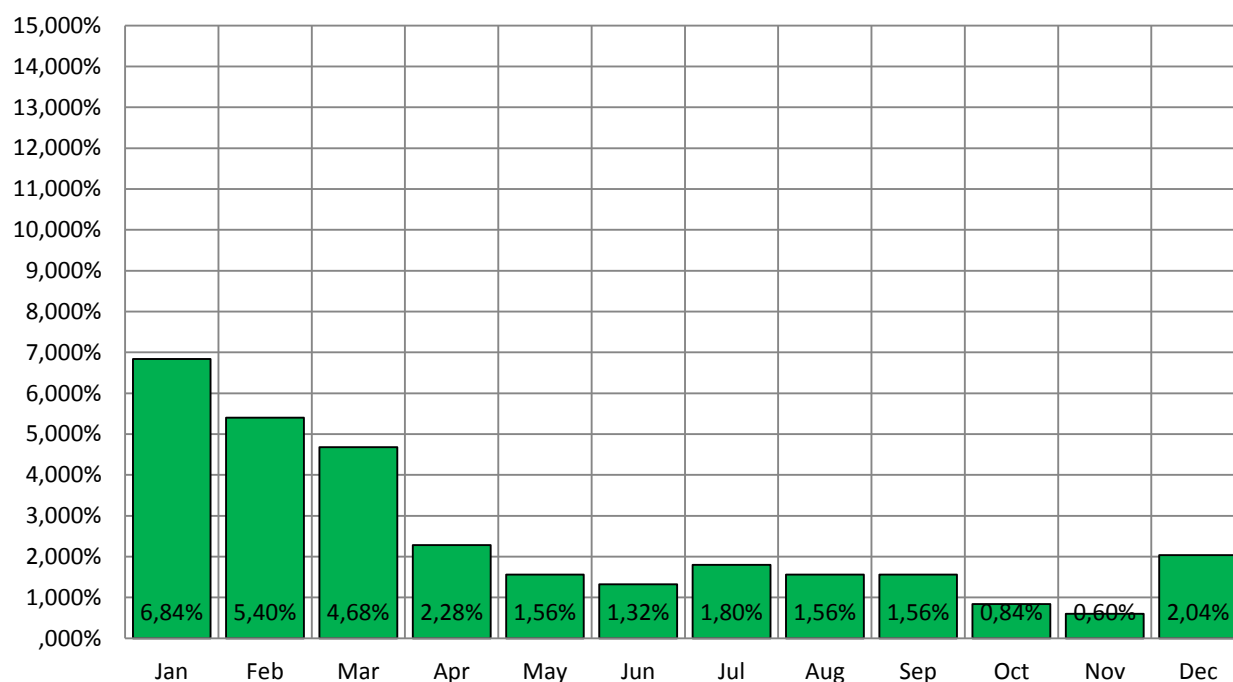


Fuel Surcharge 2020 - base price €1,25 per litre



All tariffs are based on an average fuel price of € 1,25 per litre. Adjustments above € 1,25 per litre will be calculated as follows; $F_s = ((P_a - P_b) / P_b) \times A$. (F_s = fuel surcharge, P_a =actual diesel price per litre, P_b = base diesel price € 1,25 per litre, A = share of total costs 30%). Source is the actual diesel price as published by Shell every 1st day of the month

2020	Diesel Price per Ltr. V.A.T. INCL	Fuel Surcharge %
Jan	€ 1,535	6,84%
Feb	€ 1,475	5,40%
Mar	€ 1,445	4,68%
Apr	€ 1,345	2,28%
May	€ 1,315	1,56%
Jun	€ 1,305	1,32%
Jul	€ 1,325	1,80%
Aug	€ 1,315	1,56%
Sep	€ 1,315	1,56%
Oct	€ 1,285	0,84%
Nov	€ 1,275	0,60%
Dec	€ 1,335	2,04%

Source diesel price per Liter:
Source diesel price per Liter:

Shell
www.oliecentrale.nl